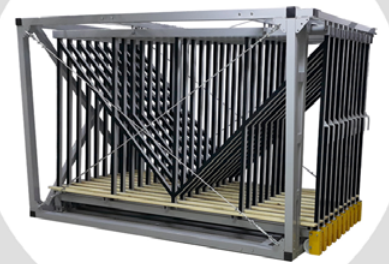


Glass racking systems



Expoglass racking system is the steel construction used to store plate materials, especially glass sheets.

They consist of a frame - a fixed steel structure and a group of single racks - drawers (inside the frame), which can be pulled in order to load or unload the glass. The drawers are narrow steel frames inclined at an angle of around 5 degrees with the 1cm of space between each other.

Therefore Expoglass glass racking system optimizes the storage of glass sheets and can save up to 75% of the space, comparing to conventional A type glass racks, with quick access to every single kind of stored glass.

Glass racking systems

Expoglass glass racking systems are available in various dimension versions listed below

Name	M80	M260	D80	D220	S140
Storage width per drawer [mm]	80	280	80	220	140
Max load per drawer [kg]	900	2500	1500	2500	1500
Size of stored sheets [mm]	1605 x 2550	1605 x 2550	2550 x 3210	2550 x 3210	1700 x 3210
Number of drawers*	10÷20	8÷ 12	10÷16	8÷16	8÷16

*Number of drawers can only be an even number

Example - M80-20

Number of drawers – 20

Loading width of single drawer – 80mm

Max load of single drawer – 900 kg



Example - M80-20

Total width – 3120 mm

Capacity [kg] – $20 \times 900 \text{ kg} = 18\,000 \text{ kg}$

Capacity [mm] – $20 \times 80\text{mm} = 1600 \text{ mm}$

Access to any drawer at any time!

